

TheValley

2024

News from Tamar Valley National Landscape

Inside:

AONB to National Landscape
Refreshing our Management Plan
Tamara Scheme Update
Strolls & Rolls
Farming in Protected Landscapes
Taking Action for Nature
Tamar Valley Centre News
Events for 2024



Contents

- 3 New name reflects significant role in protecting the environment
- 4 Refreshing the Tamar Valley Management Plan
- 4 Funding for Tree Planting
- 5 Devon Bat Survey 2024

Tamara Landscape Partnership Scheme update:

- 6 Tamara Landscape Partnership creating a brighter future
- 7 Tamara Coast to Coast Way, one year on
- 7 Calstock Ferry to launch soon
- 8 23 farms create new Conservation Cluster
- 8 Second Apprentice kick starts career in Tamar Valley
- 9 Bringing history to life for young people
- 9 Research reveals lives of mineworkers
- 10 Wild about Wellbeing
- 10 Promoting our Produce
- 11 Tamar Valley River Festival to take place this year!
- 11 Join in with local walks
- 12-13 Events
- 14-15 Farming in Protected Landscapes
- 16 Tamar Valley Centre given new lease of life
- 17 Mary Martin Summer Exhibition 2024
- 18 Taking action for Nature in our National Landscape
- 19 Strolls & Rolls routes open up access within Tamar Valley National Landscape
- 19 Naturally Healthy May
- 20 Celebrating 25 years of Buckland Community Orchard
- 20 Plymouth Sound and Estuaries
- 21 Railholiday scoops sustainability award
- 21 Recycling for Charity project
- 22 Calstock Parish Crew – come onboard!
- 22 Calstock Parish Archive
- 23 Stoke Climsland Carbon Zero Homes Project
- 24 Making a difference to Tamar Valley communities
- 24 Meet the Team

Chair's Welcome



In a modern world of social media, it is often said that 'all publicity is good publicity'. We have certainly received an encouraging number of positive news stories in the wider media over the past few months. Following the launch of the increasingly popular 'Tamara Coast to Coast Way', leading to record Guidebook sales of around 4,000 copies across the UK and beyond, it is clear that real interest in the Tamar Valley continues to grow.

Recent features on farming solutions for integrated flood management and healthy soils, demonstrated within the Lockett Stream catchment, by the 23 farms within the Stoke Climsland Farm Cluster, working with Westcountry Rivers Trust, the Environment Agency and a key component of our Tamara Landscape Partnership Scheme, are a timely reminder of climate change and mitigation measures after a near record wet winter.

But by far the biggest media win was hosting the BBC Countryfile team for a full edition at the start of the year, showcasing many Tamara projects as well as following the journey from Coast to Coast, at every turn each highlighting the true beauty of our newly named Tamar Valley National Landscape.

Inspiration indeed for us all this coming season to breathe in our wonderful Valley and enjoy the experience. We would encourage you to please share your thoughts on how together we can shape our next 5-year Management Plan and 30-year vision to secure a bright future across our great community.

Martin Howlett
Chair, Tamar Valley National Landscape Partnership

Keep in touch

Sign up to receive quarterly ebulletins from Tamar Valley National Landscape - a great way to keep up to date with progress on projects and volunteering opportunities in between issues of *The Valley* newsletter, now produced annually. Please email: charlotte.dancer@cornwall.gov.uk

Front cover image - Harewood © Fotonow



@tamarvalleynl



@tamarvalleynl



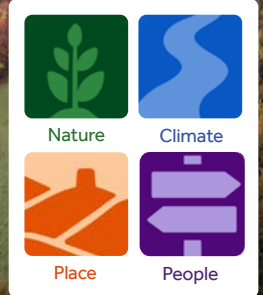
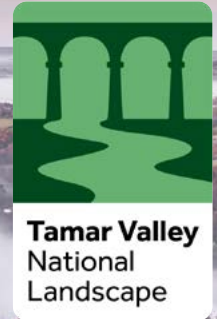
@tamarvalleynl



@tamarvalleynl



@tamarvalleynationallandscape



New name reflects significant role in protecting the environment

Last November all designated Areas of Outstanding Natural Beauty (AONBs) in England and Wales underwent a major name change and rebrand to become National Landscapes.

Reflecting their national importance, the new name acknowledges the vital contribution these areas make in protecting the nation from the threats of climate change, Nature depletion and the wellbeing crisis, whilst also creating greater understanding and awareness of the work that they do.

This is a significant milestone for the UK and the next step in fully realising the National Landscapes' vision to be the leading exemplars of how thriving, diverse communities can work with and for Nature in the UK.

National Landscapes teams have been at the forefront of providing natural solutions to the main challenges facing the nation for many years. The new brand underscores their commitment to redoubling their efforts and engaging with a wider audience.

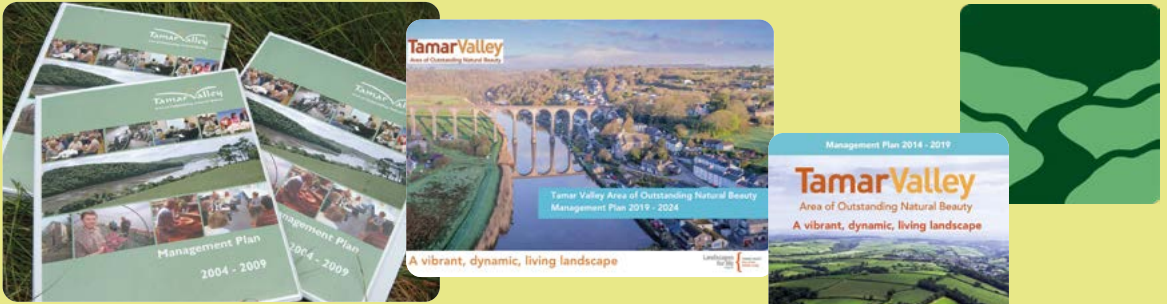
Because of their size and scope, the 46 National Landscapes in the UK are ideally positioned to address the environmental issues the UK is facing. *66% of people in England (44 million) live within 30 minutes of a National Landscape and at least 170 million people visit them every year.*

By 2030, National Landscapes aim that, within their boundaries, at least 200,000 hectares of the most valuable natural areas - equivalent to 1¼ times the size of London - will be in favourable condition, while 100,000 hectares (approximately 9 x the size of Manchester) of wildlife-rich habitat will be created or restored.

To find out more visit www.tamarvalley-nl.org.uk

"We welcome the long-awaited launch of National Landscapes and rebranding of our Tamar Valley Area of Outstanding Natural Beauty in recognition of nearly 30 years protecting and enhancing our celebrated corner of the South West."

**Martin Howlett, Chair,
Tamar Valley National
Landscape Partnership**



Refreshing the Tamar Valley Management Plan

The Tamar Valley was designated an Area of Outstanding Natural Beauty (AONB) in 1995 and its first Management Plan was created. Every five years, the Management Plan is refreshed as projects are delivered and new goals emerge.

These Management Plans are a statutory requirement and set out the goals for Nature preservation, help to coordinate delivery across a range of partner organisations, attract project funding and shape activities to connect audiences with the Tamar Valley area.

Since 1995, we have secured £16m of investment and delivered 343 projects for the Tamar Valley through delivery of our Management Plans.

Our current Management Plan is due for a refresh and will focus on 2025 – 2030, an important period of time when we need to achieve government targets for Nature and biodiversity enhancement, as well as carbon net zero and climate adaptation.

We've begun to engage with partners to explore our priorities, and we shall soon be consulting on a first draft of our next Management Plan over the summer. We will be identifying long term plans too and shaping a vision for 2055, defining another 30 years of delivery, which will continue to protect and enhance Nature, create resilience as we adapt to a changing climate and ensure that the Tamar Valley is an accessible, healthy and thriving place for all.

We'd really appreciate your help to shape these important plans!

To help, get in touch through your Parish Council, come and talk to us on Tuesdays at the Tamar Valley Centre, Cemetery Road, Drakewalls PL18 9FE or fill out the survey at <https://letstalk.cornwall.gov.uk/>

You can also find out more via our website: www.tamarvalley-nl.org.uk

Funding for Tree Planting

Forest for Cornwall can help you to plant trees.

The Cornwall Council initiative has been involved with communities, environmental groups, farmers and landholders across Cornwall this winter. Forest for Cornwall aims to support everyone to plant trees across Cornwall. This includes everything from planting a whole woodland to individual trees in gardens, hedgerows, street trees, parks, trees on farms and orchards.

Every tree planted will contribute to improving natural habitats, biodiversity, economic and health benefits, and helping to tackle climate change. There have been street trees planted in five areas including Torpoint, Saltash, Callington and Newquay, community fields in Dowlunderry, over 60 landholder and farm projects, as well as four agroforestry pilot projects.

More information can be found at www.cornwall.gov.uk/environment/countryside/forest-for-cornwall-programme

Tamar Valley National Landscape will be acting as a host centre for this year's Devon Bat Survey, run by Devon Wildlife Trust as part of the Saving Devon's Treescapes project's species monitoring programme. The survey offers Devon residents the chance to borrow a static bat detector to record the types of bats flying near them.



**Saving
Devon's
Treescapes**

Devon Bat Survey 2024

From 7th May, you will be able to sign up to take part in the survey through the Devon Wildlife Trust website (just search for Devon Bat Survey at www.devonwildlifetrust.org). You can find full instructions for setting up the detector online and in the box with the kit when you collect it Tamar Valley Centre, Drakewalls, PL18 9FE. The survey season runs from 20th May until the beginning of October, so there is plenty of time to take part. Early booking is advised as the survey is always popular.

By taking part, not only will you find out which bats are near you, but you will be contributing valuable information that informs our picture of Devon's bat populations. The data collected will become part of the Devon Biodiversity Records Centre's species database. All bats are protected species, and the information collected will be available for use in relation to planning/development, habitat management, conservation and academic research.

So come and get batty with us this year!



Did you know?

16 of the 17 resident bat species in the UK can be found in Devon?



Top image: Common Pipistrelle © Tom Marshall
Middle image: Bat detection kit
Lower image: Brown Long Eared Bat © Hugh Clark



Launch of the Tamara Coast to Coast Way, July 2023

Tamara Landscape Partnership creating a brighter future

It's hard to believe that we're already halfway through the Scheme, with highlights including the opening of the Tamara Coast to Coast Way, the new 87-mile walking route which broadly follows the River Tamar, and plans to reinstate the Calstock Ferry on a trial basis later this year.

Since it began in 2021, the team have put on over 300 events - from water monitoring, wellbeing, art and heritage, to coppicing, tree planting and allotment workshops for wannabe growers. Hundreds of school children have taken part in activities to learn about our waterways, Nature, heritage and the environment. Over 100 farmers and landowners have been supported with advice on Rural Payments and Farming in Protected Landscapes applications and large landscape-focused water improvement projects are also underway. Two apprentices have started as part of the Tamara Trainees project and more training opportunities will come this year and next. Key heritage sites like Okel Tor Mine are one step closer to being safeguarded thanks to the removal of vegetation, and a number of Monument Management Plans have been prepared. It's been a busy couple of years and there's so much more still to come!

Opposite: Marker stone at the source of the River Tamar, designed by Esme Lawton

The Tamara Landscape Partnership Scheme aims to create a brighter future for the Tamar Valley and its communities through ten exciting projects covering heritage, Nature, wellbeing, produce, training and farming. Primarily funded by the National Lottery Heritage Fund, Cornwall Council and Devon County Council, with match-funding commitments from other partners, a total of £3.2 million will be invested across the Tamar Valley landscape between 2021 and 2025. Over the next six pages, we share some of the Scheme's incredible achievements to date and take a look at the many plans and projects still to come.



This July, it will be the one-year anniversary of the opening of the Tamara Coast to Coast Way. Since then, hundreds of people have walked the route, either completing the whole stretch or enjoying certain sections (there are seven in total). Some have even run the route in a matter of hours for charity!

Tamara Coast to Coast Way, one year on

You might not have heard that the opening of the Tamara Coast to Coast Way in turn created a second new walking route, the Circuit of Cornwall. This route enables walkers to walk (or run!) the whole way around Cornwall for the first time.

More information about these walks and a host of shorter circular walks can be found on the Tamar Valley National Landscape website www.tamarvalley-nl.org.uk. There is also a Tamara Coast to Coast Way Facebook group, managed by our partner Visit Tamar Valley (@tamaracoasttocoastway). It's a great place to connect with other walkers, ask questions, promote your business and share experiences. There's also the Guidebook, which can be purchased from Visit Tamar Valley (www.visittamarvalley.co.uk) and selected bookshops.

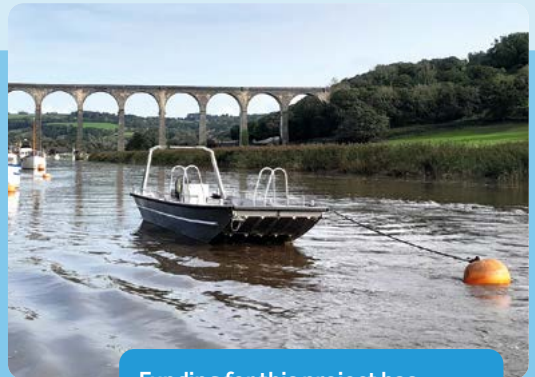


The first walkers to complete the Tamara Coast to Coast Way – Gary Lewis and Sarah Richardson from the Tamara Scheme team

Calstock Ferry to launch soon

Plans to relaunch the Calstock Passenger Ferry on a trial basis are well underway for later this year. The new electric ferry has been delivered and is being fully kitted out to meet the Maritime and Coastguard Agency's certification requirements. We have also recruited a Skipper/Project Manager who will run the ferry for the next two seasons - watch this space (and Tamar Valley National Landscape's social media channels) for the official opening date.

The ferry will operate on a trial basis between Ferry Farm on the Devon side of the River Tamar and Calstock on the Cornish side. This will enable people to walk the Tamara Coast to Coast Way without needing to take the train from Bere Alston to Calstock. We also plan to operate routes to Cotehele and potentially to Ward Quay opposite Cotehele, allowing a wonderful short circular walk along both banks of the River Tamar.



Funding for this project has come from the National Lottery Heritage Fund as well as Tamar Valley National Landscape, which secured additional 'Access for All: Removing Barriers in Protected Landscapes' grant funding from Defra.

Clamoak hedge planted



23 farms create new Conservation Cluster

23 farms have been approved for Defra funding as a farm cluster. The farms, covering approximately 2,900ha, form a significant part of the Stoke Climsland parish and the Lockett Stream catchment area and they will focus on land management improvements over the next three years to increase biodiversity and improve water quality.

Farmers and land managers do a lot for the rural environment, but there is only so much that an individual, acting in isolation, can achieve on their own. The farmers will work cooperatively to create connected, wildlife rich corridors across our farmed landscape and to minimise human impact on the water that flows into the River Tamar.



Holly Roberts, our new apprentice

Second Apprentice kick starts career in Tamar Valley

The Tamara Trainees project for the Tamar Valley has appointed its second apprentice. Business Administration Apprentice, Holly Roberts is the second of 11 apprentice and internship trainees who will work in the Tamar Valley as part of the £209,000 project. This apprenticeship is funded by the National Lottery Heritage Fund, together with Tamar Valley National Landscape and Tamar Grow Local, and Holly will be learning on the job with both organisations.

The Tamara Trainees project aims to improve the job prospects of those living in and around the Tamar Valley and to provide support for local businesses.

The project will provide apprenticeships and internships for both the rural and urban populations and remove barriers which may have stopped some people from taking up training opportunities in the past.

There will be more opportunities over the coming months and they will be advertised on Cornwall Council's website, Tamar Valley National Landscape's website and on their social media channels (@tamarvalleynl).

“It is really rewarding working with young people to explore how understanding the Tamar Valley’s heritage can broaden their knowledge of where they live.”

Gary Lewis, Tamara Senior Heritage Officer

Bringing history to life for young people

Tamara is working to care for the Valley’s heritage and inspire the next generation. The team has been running workshops and events with children and young adults, including organising trips to The Box in Plymouth and visits to National Trust properties at Cotehele and Buckland Abbey.

Earlier this year, Calstock Community Primary School won the Prince’s Trust Primary Impact Award. The award promotes and celebrates excellence in primary leadership, recognising primary schools that put quality subject teaching at the heart of the classroom. A school workshop at the National Trust’s Cotehele, that focused on the River Tamar and involved artists, photographers and researchers, was part of their submission.



Research reveals lives of mineworkers

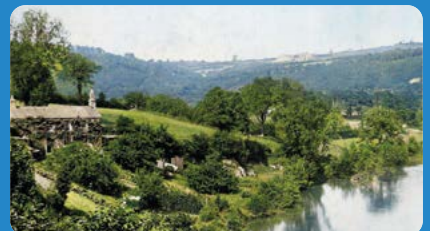
The Tamara Scheme and the Cornwall and West Devon Mining Landscape World Heritage Site have undertaken new research into Mineworkers’ Smallholdings in Area 10 of the World Heritage Site – the Tamar Valley Mining District with Tavistock.

The findings provide a fascinating account of the lives of mineworkers’ families in the mid-nineteenth century, but also provide key information of historic land use, and will inform other Tamara led work on orchards, market gardening and allotment ownership.

In total, 77 smallholdings were identified and spread across the parishes of Calstock, Stoke Climsland and Bere Alston. Mineworkers’ smallholdings were leased or owned by mineworkers and were usually between three and five acres. They were used by mineworking families to grow crops, keep livestock and plant orchards to help feed the family and supplement their income. A copy of the full report, ‘Mineworkers’ Smallholdings within the Tamara Landscape Partnership Area’, will be placed in both Kresen Kernow (the Cornwall Archive) and The Box, Plymouth and is publicly available to view as a digital document at www.cornishmining.org.uk/about/education.



Weir Head Gunnislake 1880s (Stephen Colwill Collection)



New Bridge, Gunnislake, 1880s (Stephen Colwill Collection)

Wild About Wellbeing

One of the projects that Tamara has been involved with is 'Wild About Calstock'. It was commissioned by Calstock Parish Council's Working Group to engage children from Calstock and Stoke Climsland Primary Schools and members of Sensory Trust's local dementia-friendly Walk & Laugh group.

Three Nature walks focusing on foraging, winter wetlands and hidden wildlife have taken place. The first at Cotehele, the second at Calstock and the third at Cotehele Quay. The artist, Ellie Robinson-Carter, invited everyone to document each walk with a shared single-use camera to create the images for a new collection of Photobooks, titled 'Wild About Calstock'. The project also included a visit to The Box in Plymouth where Natural History Curator, Sarah Marden, showed the group a special selection of specimens from the Tamar Valley. This project culminated in an exhibition and book launch at Calstock Arts in March. We are hopeful that more of these sessions will take place in the future.

The project was supported by the Tamara Scheme, FEAST, Arts Council England, Cornwall Council, Calstock Parish Council, Sensory Trust, The Photobook Project, The Box, and Calstock Arts.

So far, our Natural Connections project, which aims to improve the wellbeing of people who live in and around the Tamar Valley, has held over 125 wellbeing sessions for over 550 people. Activities include group walks, intergenerational photography projects, gardening, baking using local produce, kayaking, wood whittling, journal making, and painting.

Promoting our Produce

The Promoting our Produce project aims to support and revitalise the market garden industry. Tamar Grow Local is a partner and is leading this project, running workshops, talks and demonstrations. Earlier this year, Tamar Grow Local ran a workshop in St Dominick looking at planning your growing space, allotment infrastructure, no-dig techniques, choosing and sowing seeds. The workshop attracted people from as far afield as St. Austell, Bude and Plymouth and also some brand new 'allotmenters' who will be taking plots at the new Milton Abbot allotment site - the development of which is being supported through the Tamara Scheme. For details of other workshops and other ways to green your fingers, visit www.tamargrowlocal.org.



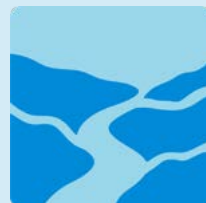
Above: Tamar Grow Local's pasteuriser for their apple juicing facility in Kelly Bray

Tamar Valley River Festival to take place this year!

We're really excited to announce that we're putting on a brand-new River Festival for the Tamar Valley this year!

TAMART24 is a free family-friendly event that will take place in Calstock on Saturday 26th October 2024 and will celebrate everything the river has to offer through art, crafts, music, workshops, food and drink.

The community arts-based festival will involve interactive activities and workshops including folk music, gig boat racing, multi-media exhibitions, local produce cooking, singing workshops, hands-on art activities, a River of Hope exhibition and parade, and more. Local schools, Calstock Parish Council and others including Tamar Valley National Landscape, Tamar Grow Local, the National Trust and a host of community groups will be involved. It's set to be a popular day. More detail can be found on our website - www.tamarlandscapepartnership.org.uk



Join in with local walks...

Our free weekly walking groups are a great way to explore the Tamar Valley and meet new people. No need to book, just turn up at the meeting points a few minutes before the walk begins.

Choose from;

- Every Monday morning – Saltash Walk & Talk
- Every Wednesday morning – Tamar Valley Walk & Talk
- Every Thursday morning – Tamar & Bere Wellbeing Walks

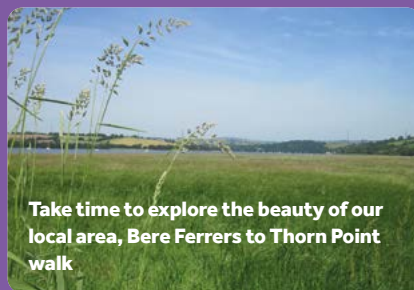
View or download the programmes here -

www.tamarvalley-nl.org.uk/discover-explore/walking/free-walk-groups/

Enjoy some peace and quiet at South Hooe Cottage Farmland Nature Trail. Open dawn til dusk on the first Saturday of every month (sorry, no dogs) -

<https://www.tamarvalley-nl.org.uk/discover-explore/places-of-interest/south-hooe/>

Calstock Footpath Society, walking and caring for footpaths since 1984, offers a fantastic range of local walks, too. Join them for monthly guided walks. Find out more by emailing calstockfootpath@gmail.com



Take time to explore the beauty of our local area, Bere Ferrers to Thorn Point walk

Events

Here's a selection of events, activities and volunteering opportunities for you to enjoy throughout the Tamar Valley. New events are added regularly to our online Events Calendar.

Visit www.tamarvalley-nl.org.uk and click on News, Events & What's On for your up-to-date guide.



Please note: events may be subject to change. Please contact the event organiser in advance to check. Persons who participate in events do so at their own risk. Neither the Tamar Valley National Landscape team, other organisers, nor landowners shall be liable for any death, loss or damage sustained. Participation in events is at the discretion of the leader. Whilst every care has been taken, no responsibility can be taken for inaccurate information in the newsletter.

May

Monday 13 – Wednesday 15
3-day Beekeeping Beginners Course
Cost: £225 inc. VAT
Venue: Henwood
Booking/Information: info@tamargrowlocal.org
Organiser: Tamar Grow Local

Wednesday 15
Valley Volunteers Working Party – Tamar Trails
 Join in with a range of hands-on tasks at Tamar Trails, with the Valley Volunteers.
Notes: tools and equipment provided, please bring gloves. Wear sturdy footwear, be prepared for weather on the day. Lunch and refreshments provided. Please bring cups and cutlery.
Information: 07971 768147, greenwood.music.plus@gmail.com (Phil Harwin)
Organiser: Tamar Community Trust

Thursday 16, 8pm
Bat & Nightjar Walk
Venue: Tamar Trails, Gulworthy
Booking: essential – 01822 834773 (Ross Hanley)
Organiser: Gunnislake Community Matters

Saturday 18, 10am–12noon
Community Walk – Wheal Sheba Mine, Luckett
 Community Walks usually take place on the 3rd Saturday of each month. Other dates include: 15 June (Burrator) and 27 July (Thorn Point, Bere Ferrers).
Meet: Gunnislake car park

to car share (please obtain a ticket from the machine)
Information: www.gunnislake.org
Organiser: Gunnislake Community Matters

Saturday 18
Valley Volunteers Working Part – Wacker Quay
 Join in with a range of hands-on tasks at Wacker Quay, with the Valley Volunteers.
Notes: see 15 May event for details.
Information: 07971 768147, greenwood.music.plus@gmail.com (Phil Harwin)
Organiser: Tamar Community Trust

Sunday 19, 11am–4pm
Spring Garden Open Day
 Enjoy spending time exploring 55 acres of historic woodland gardens.
Cost: £7.50 per person (under 12s and dogs free)
Venue & Organiser: Pentillie Castle & Estate, St Mellion
Information: contact@pentillie.co.uk, 01579 350044

Friday 24 – Monday 27
Spring Exhibition & 20th Anniversary Celebration
Venue: The Market Hall, Devonport
Information: drawntothevalley.com
Organiser: Drawn to the Valley

Saturday 25, 10:30am–12:30pm
Wildflower Walk
 Come and learn about the various plant species found on the reserve, with Chris Ullman,

from St Cleer.
Notes: please wear suitable clothing and footwear as some of the terrain is steep and can be slippery. Children must be accompanied by an adult.
Meet: outside the Cecil Arms, St Stephens, Saltash
Information: churchtownfarm.saltash.website
Organiser: Friends of Churchtown Farm Community Nature Reserve

June

Saturday 1, 2pm–3:30pm
Discover Tavistock – The Wharves
 Short, flat walk, to visit the five wharves at the head of Tavistock Canal.
Notes: please wear suitable footwear and outer clothing, and bring water.
Cost: £5 per person (not suitable for under 16s)
Meet: Visitor Centre, Guildhall Square, Tavistock
Booking & payment: www.heritageintavistock.org.uk/ events (or at the Visitor Information Centre)
Organiser: Tavistock Heritage Trust

Sunday 2, 12noon
The Big Lunch, Gunnislake
 Part of the national event organised by the Eden Project. Bring your own food or buy hot dogs/burgers. Please bring drinks and games.
Venue: Commercial Street, Gunnislake (if wet, Gunnislake Village Hall)

Thursday 6, 3:30pm–5pm
Tamar Valley Centre BioBlitz
 Help us record the biodiversity in the grounds of the Tamar Valley Centre. Other dates: 4 July, 1 Aug, 5 Sept, 3 Oct (times tbc)
Venue: Tamar Valley Centre, Drakewalls, PL18 9FE
Booking/Information: @tamarvalleynl social media channels nearer the time
Organiser: Pollenize CIC and Tamar Valley National Landscape

Saturday 8, 10:30am–4:30pm
Butterflies, Moths and Caterpillars
 With conservation advisor, Dr Peter Beale.
Venue & Organiser: The Garden House, Buckland Monachorum
Information: www.thegardenhouse.org.uk, 01822 854769

Friday 21, 5:30pm
Wacker Quay to Antony Walk
 2-mile walk with lovely river views. Enjoy a drink at The Carew Arms before walking back to Wacker Quay.
Meet: Wacker Quay on A374, SX 390 553
Booking/Information: 01752 446287, janekiely3@gmail.com
Organiser: Friends of the Tamar Valley

Saturday 22, 12noon–5pm
Tamar Valley Fete
 Lots of activities for all the family. Music by The Countrymen.
Cost: adults £3, children free

Venue: King George V Playing Field, St Ann's Chapel
Information:
 tamarvalleyfete.org

Saturday 22, 10am-3pm
Beekeeping
 Join apiarist, Robbie Ryder, for an introduction to beekeeping.
Other date available:
 Saturday 17 August.
Cost: £45
Venue: Horsepool Apiary, near Shevick
Booking/information:
 familyforagingkitchen.co.uk
Organiser: Family Foraging Kitchen

Sunday 23, 2pm-4pm
Discover Tavistock – The Railways
 Join Stephen and Claire Fryer for a visit to two railway sites – the South Devon and Tavistock Railway Company and the Plymouth, Devonport and South Western Junction Railway.
Notes: please wear suitable footwear and outer clothing, and bring water.
Cost: £5 per person (not suitable for under 16s)
Meet: Visitor Information Centre, Guildhall Square, Tavistock
Booking & payment:
 www.heritageintavistock.org.uk/events (or at the Visitor Information Centre)
Organiser: Tavistock Heritage Trust

Friday 28 – Sunday 30
Calstock Heritage Weekend
 A 3-day celebration of all things heritage.
Information: @calstockheritageweekend Facebook page

July

Sunday 7
St Mellion with Pillaton Cherry Feast
Venue: Bush Farm, Pillaton, PL12 6QY
Information: 07771 756125

Saturday 13 – Sunday 21
Gunnislake Festival
 Open art show, community walk, history talk, parish archives display, pub quiz, live music, scarecrow competition. Family fun day will be held on Saturday 20 July.

Information:
 www.gunnislake.org
Organiser: Gunnislake Community Matters

Saturday 27, 12noon-5pm
Latchley, Chilsworthy & Cox Park Show
Information:
 www.lccpshow.org

Tuesday 30, 10:30am
Mount Edgcumbe Estate Walk
 3-mile walk with Clive Charlton and Jane Kiely along tracks and the South West Coast Path. Amazing views everywhere!
Meet: car park behind Maker church, SX 448 520
Booking/Information:
 01752 446287, janekiely3@gmail.com
Organiser: Friends of the Tamar Valley

August

Tuesday 6 – Saturday 10
Drawn to the Valley Summer Exhibition
 Part of Drawn to the Valley's 20th anniversary year of celebrations.
Venue: Butchers' Hall, Tavistock
Information:
 drawn-to-the-valley.com
Organiser: Drawn to the Valley

Thursday 8, 9:30am-3:30pm
Volunteer Day at Kit Hill Country Park
 Bracken pull, odd jobs and litter pick. Working alongside Tavistock Task Force
Meet: Adit car park (2nd on left of road to summit), SX 37957 71451
Information: countrysideservevice@cormacltd.co.uk
Organiser: Corserv Solutions Ltd

Saturday 17
Wildside
 Enjoy a visit to Wildside, Buckland Monachorum. Chance to enjoy lunch at the Drake Manor Inn beforehand (booking through Jane essential, extra charge).
Cost: £12.50 entry to Wildside (payable on the day)
Booking/Information:
 01752 446287, janekiely3@gmail.com
Organiser: Friends of the Tamar Valley

Saturday 24 – Sunday 1 September
Drawn to the Valley Open Studios
 Part of Drawn to the Valley's 20th anniversary year of celebrations.
Venue: various throughout the Tamar Valley
Information:
 drawn-to-the-valley.com
Organiser: Drawn to the Valley

Saturday 31 – Monday 9 September
Kelliwick Gorsedh, Callington
 A celebration of Cornish language, arts, history and sport, with concerts, walks, talks and workshops.
Venue: various throughout Callington. Check locally for full details nearer the time.

September

Saturday 7, 10:30am
St Germans Walk
 3-mile walk with Jane Kiely around St Germans. Coffee/tea at Stable Café, visit the Priory church, optional lunch at pub, or walk around Port Eliot estate & gardens (10am-3pm).
Meet: roadside parking near top of Old Quay Lane on bend near Scholars Restaurant, PL12 5LG.
Booking/Information:
 01752 446287, janekiely3@gmail.com
Organiser: Friends of the Tamar Valley

Monday 9
Garden Sculpture & Art Exhibition
 Part of Drawn to the Valley's 20th anniversary year of celebrations.
Venue: The Garden House, Buckland Monachorum
Information:
 drawn-to-the-valley.com
Organiser: Drawn to the Valley

Saturday 14 – Sunday 22
Harvest and Apple Pressing
 Part of the 25th anniversary celebrations of Buckland Monachorum Community Orchard.
Information: bmco.info

October

Friday 4, 7:30pm
Tamara Coast to Coast Way Talk
 Will Darwall, Tamara Scheme Manager, will tell us about the

newly created 87-mile Tamara Coast to Coast Way.
Venue: Tamar Valley Centre, Drakewalls, PL18 9FE
Booking/Information:
 01752 446287, janekiely3@gmail.com
Organiser: Friends of the Tamar Valley

Saturday 5
Bere Apple Fest
 A fabulous family day out, celebrating apples and the Tamar Valley's orchard heritage. Further information available nearer the time.
Information:
 @TavyandTamarAppleGroup Facebook page
Organiser: Tavy and Tamar Apple Group

Thursday 17
Apple Day Dinner
 Part of the 25th anniversary celebrations of Buckland Monachorum Community Orchard.
Information: bmco.info

Saturday 26, approx 10:30am-7pm (tbc nearer the time)
TAMART24 River Festival
 Free family-friendly art festival, celebrating the River Tamar. Interactive workshops, activities, live music, gig boat racing, Morris dancing, River of Hope parade. Come along and learn more about the natural and historic heritage of our landscape.
Venue: Calstock village
Organiser: Tamara Landscape Partnership Scheme
Information:
 bryonyjames@cornwall.gov.uk, or 0300 1234 100, press 1 and ask for Bryony James.

November

Friday 1, 7:30pm
The Voyage of HMS Tamar Talk
 Bruce Hunt will provide a talk on the warship that was built in Saltash in 1758, that went on to circumnavigate the globe.
Venue: Tamar Valley Centre, Drakewalls, PL18 9FE
Booking/Information: 01752 446287, janekiely3@gmail.com
Organiser: Friends of the Tamar Valley



Landulph Orchard Group tree planting

Farming in Protected Landscapes

Farming in Protected Landscapes is now in its fourth and final year of the current programme, running until March 2025.

This Defra-funded programme awards grants to farmers and land managers to carry out bespoke projects under the themes of Climate, Nature, People and Place. Here at the Tamar Valley, over 50 projects have been approved so far, receiving a total of £704,246 and we have £516,486 for our final year.

We have funded a range of projects, from hedgerow creation and management to water management and quality improvements through pond and scrape creation, installing leaky dams and orchard creation. All of these are helping the Tamar Valley to manage the effects of climate change and improve habitats to support the wildlife in the area to thrive. We have also supported several projects with facilities to allow them to welcome visitors to their farms to learn about where their food comes from and the environment around them.

If you have a project in mind that would meet at least one of the Farming in Protected Landscapes outcomes, there is still time to apply for funding. Please contact Becky Butland, the Tamar Valley Farming in Protected Landscapes Officer - becky.butland@cornwall.gov.uk or 07354 163254 to discuss your projects and to find out how we may be able to support you.



To date, projects approved will see:

Hedgerows planted
2,577m

Hedgerow laid
3,686m

Trees planted incl. hedgerows and orchards
2,402

Herbal leys planted
18ha

Ponds created/restored
7

Bird & wildlife boxes
270

Just four of the many projects awarded funding through the Tamar Valley Farming in Protected Landscapes programme. More project examples can be found at www.tamarvalley-nl.org.uk/farmers-and-landowners/farming-in-protected-landscapes/projects/

Stoke Climsland Farm Cluster

As highlighted on page 8, the Stoke Climsland Farm Cluster is a group of 23 farmers in the Stoke Climsland parish. This Farming in Protected Landscapes project will provide ecology surveys across the whole cluster, giving land managers baseline information to help the group and individuals make informed decisions for improving land management collaboratively.



Warleigh Barton

Katherine and Elsa Kent are passionate about regenerative agriculture to encourage more wildlife to their farm in the heart of the Tamar Valley and to share their knowledge and inspire children to understand about Nature, the environment, farming, food and the countryside.

Their Farming in Protected Landscapes project is ambitious, with many elements to improve their farm for Nature, and provide a safe space for education groups to visit the farm and get up close with Nature. They are installing three osprey nests, wildlife boxes and wildlife scrapes. Over 400 native trees have been planted on the farm, with volunteers invited to help with the planting. In time, they hope to open the facilities to the public to come and enjoy the tranquillity and Nature. This will be managed so as not to impact the wildlife on the farm. Look out for details of these open events, hopefully starting in the next year.



Landulph Orchard

The community of Landulph have come together to form Landulph Orchard Green. They have almost completed their first Farming in Protected Landscapes project, returning a field to the market gardening heritage of the Tamar Valley by reinstating an orchard of 60 local variety fruit trees at a site close to Landulph Church. This project is improving the biodiversity of the field and encourages people of all ages from the community to work together on this project. Benches and picnic spaces will be available for people to come to the orchard and enjoy the peace and quiet, with lovely views of the church and the River Tamar. For more information see: www.landulph.org.uk/landulph-orchard-green.php.



Elwell Gardens

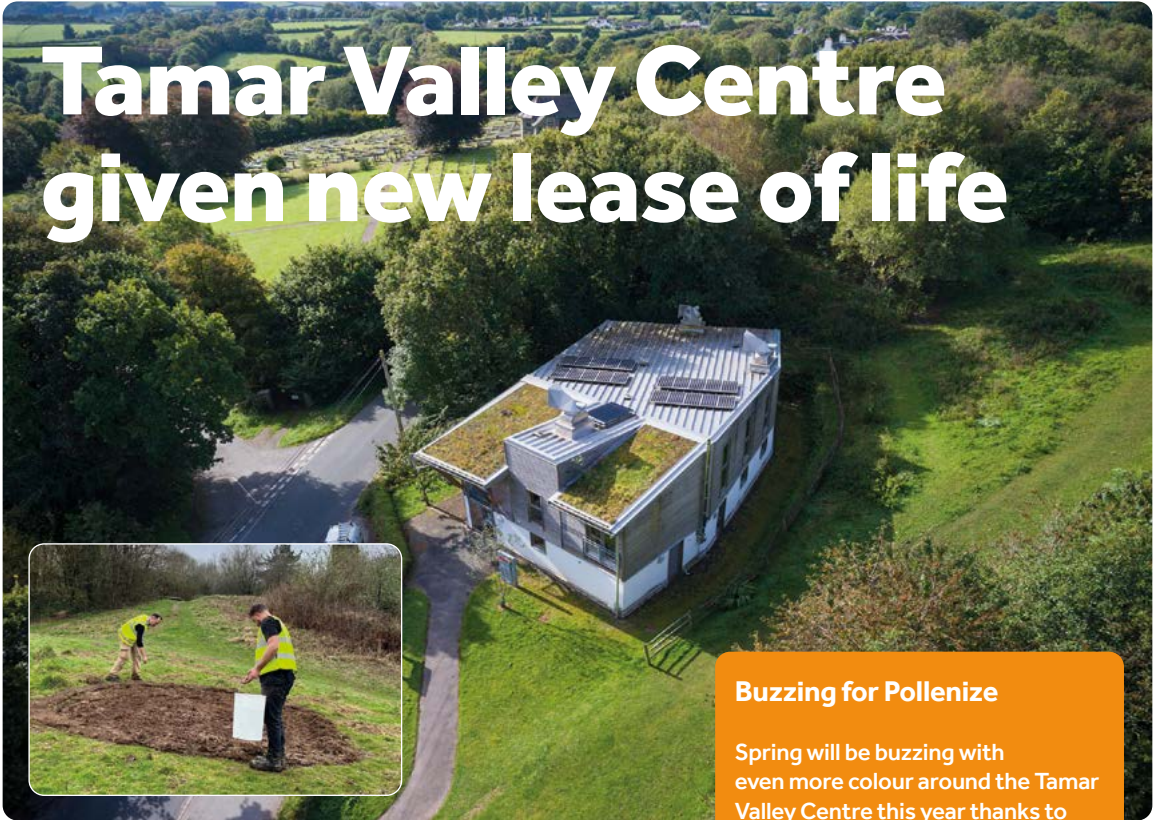
Sally and Steve Jackson wanted their property near Bere Alston to be a place where specific groups can enjoy the countryside and experience the peace and tranquillity of the area, to support the groups' health and wellbeing, and provide them with a safe place to come together.

With Farming in Protected Landscapes funding, they have been able to create ways to use an old stable block and the surrounding land for these groups. They have also extended their orchard with traditional local varieties of fruit trees, as the land used to be part of the Tamar Valley market garden industry, and planted a number of shrubs and hardwoods along the old railway, to ensure diversity and cover, should the Bere Alston to Tavistock Railway be reinstated.

The Tamar Valley Farming in Protected Landscapes panel enjoyed a visit to the site in April to see the results.



Tamar Valley Centre given new lease of life



Tamar Valley Centre, Drakewalls © Tobi O'Neill/TON Drone Services
Inset: Sowing wildflower seed in the grounds of the Tamar Valley Centre

Visitors to the Tamar Valley Centre will be greeted with a new look, informative and interactive space after a recent redevelopment.

Installed during Spring 2024, the Centre now includes large maps, interactive information points and touch screens, along with an informative and fun area for younger visitors.

Business Development Officer, Steven Draper who has been working with the team to plan the Centre's redevelopment said:

"Whether someone lives here or is visiting, we are very fortunate to have a space that we can use to inspire and inform visitors about our beautiful landscape, helping them discover more about the Nature we share it with, its heritage and how we work with incredible partners, community volunteers and landowners to conserve and enhance it."

Ensuring the information is accessible to more people has been a priority, and over the coming months the Centre will have a technology upgrade including guest Wi-Fi.

The building will also be used for more community meetings and events. You can keep updated on progress, and book meeting space, on our website –

www.tamarvalley-nl.org.uk/tamar-valley-centre/

Buzzing for Pollenize

Spring will be buzzing with even more colour around the Tamar Valley Centre this year thanks to a £6,000 Farming in Protected Landscapes project.

Visitors can take part in the citizen science project, helping to record the species in our wildflower meadow, recently planted by local Community Interest Company, Pollenize, in the grounds outside.

The pilot project, which will explore how people could use their community space to help Nature thrive will include six BioBlitz events held at the Tamar Valley Centre. Here, Pollenize will introduce the iNaturalist app, allowing people to record what they see.

Project lead, Business Development Officer, Steven Draper said: "This project helps our bees and insects, and also helps connect more people with Nature which is proven to help with our own wellbeing."

See page 12 for dates of our BioBlitz events.

A new collection of more than 50 of Mary's distinctive oil paintings reflects continued involvement with and appreciation of her beloved home area - the Tamar Valley.



Mary Martin

Summer Exhibition 2024



Above: Foxgloves in the morning light © Mary Martin

Right: Bluebells and the river at Cotehele © Mary Martin

Mary works quickly to capture those rare and fleeting effects of light that excite and inspire her to paint familiar landscapes transformed into richly coloured, special places with universal appeal.

Different tides, times of day and seasons are closely observed and portrayed, revealing the fragile beauty of this land that deserves our attention and careful protection.

Bluebells spill from ancient hedge-banks, drift across ferny woodland and soften the edges of worked stone that litters the flanks of Kit Hill. Rare fields of cultivated daffodils catch attention, their brilliant yellows contrasting with pale pheasant-eye varieties found in regenerating sun-dappled woodland. Flamboyant magnolias tower above the semi-wild garden and, in the mature orchard of local varieties, planted by Mary and her husband James more than 30 years ago, are canopies of translucent blossom and boughs of fruit.

An additional five older paintings link to earlier days when market gardens, salmon fishing and historic cherry orchards were still valued and widespread features of the Tamar Valley.

**Saturday 25 May to
Sunday 2 June 2024
Tamar Valley Centre,
Cemetery Road, Drakewalls,
Gunnislake, PL18 9FE**

Close to Gunnislake railway station - the terminus of the Tamar Valley Line from Plymouth.

Signed off the A390, close to the ASDA petrol station at the top of Gunnislake Hill. Opens 2pm Saturday 25 May, then every day 11am to 6pm.

Free admission

For more details telephone
01579 350696 or email:
virginiaspiers@icloud.com

Taking action for Nature in our National Landscape

Our vision to help restore Nature in the Tamar Valley continues to inspire our team, as we work within the community and with partners to create more, bigger, better and joined-up habitats across the landscape.

There are many positive steps being taken to drive positive action for Nature. Defra has published new targets for Nature recovery in all Protected Landscapes, and colleagues in Devon and Cornwall are working hard to finalise Local Nature Recovery Strategies for both counties. Community-led action for Nature is increasing too, and we will be recruiting a Community Wildlife Intern to support action being taken for Nature in community spaces.

Keep an eye on our social media channels @tamarvalleynl. You can read more about our commitment to helping Nature thrive in the Tamar Valley, by viewing or downloading our Nature Recovery Plan 2023-2030 - www.tamarvalley-nl.org.uk/our-work/projects/nature-recovery-plan/



Nest sculpture at Bere Alston School

Discovering Dormice on the Bere Peninsula

Last summer and autumn keen volunteers were monitoring for evidence of hazel dormice on the Bere Peninsula.

Britain's population of the hazel dormouse has rapidly declined, so the project hopes to provide records of their presence to help protect remaining numbers.

Bere Alston and Buckland Monachorum schools, along with Beavers, Cubs and Scouts, have all been involved in the project – learning about the conservation status, life cycle, and habitat requirements of the hazel dormouse, assembling footprint tunnels and helping to set up field survey sites.

We are looking to build on all of this work in the year ahead, increasing the momentum to drive forward positive action for Nature in the Tamar Valley. Contact our Project Officer, Jane Hart, for further information – jane.hart@cornwall.gov.uk.



Photo: © J Bousfield, taken under licence



Artwork by pupils from Bere Alston School

Tackling Giant Hogweed

At the start of 2024, we were pleased to secure Defra funding to finance this year's Giant Hogweed Survey and Control programme, along a 45km stretch of the River Tamar and River Lyd. It has taken many years to ensure an almost year-on-year reduction in the population of this invasive non-native species. Total plant numbers are up slightly from 2022 (282 plants located in 2023), including a persistent estuarine population (277 plants). Upstream, in the main non-tidal sections, giant hogweed is at an all-time low, which is very encouraging, with just two plants located in 2023. Full results of the 2023 programme are available to view online at www.tamarvalley-nl.org.uk/wp-content/uploads/2024/02/FINAL-Tamar-Valley-Giant-Hogweed-Control-2023-final-report-Jan-2024.pdf



Accessing Tamar Valley National Landscape has just got a lot easier, thanks to a series of stile-free walks that provide access to some of the most scenic parts of the Tamar Valley.

Strolls & Rolls routes open up access within Tamar Valley National Landscape

Many of the graded routes – between ½ mile and 4½ miles in length – are suitable for assisted wheelchairs, all-terrain pushchairs and mobility scooters. They provide access to wildlife-rich wetlands, a community Nature reserve, country park with fantastic 360° views, forest and old mine working tracks, canal and an area of tranquillity right next to the River Lynher.

Project Officer for Tamar Valley National Landscape, Jane Hart, says: "We want more people to be able to enjoy healthy outdoor activities, and to improve their connections with nature and heritage in the Tamar Valley."

To help plan your visit, Tamar Valley National Landscape has created a series of pdfs and videos, showing and describing the route (with links to an OS map), together with information on parking, nearby cafes, pubs and other facilities, and, where possible, public transport links. Choose from Calstock Wetlands, Churchtown Farm, Cotehele, Kit Hill, Tavistock Canal or Wacker Quay -

www.tamarvalley-nl.org.uk/discover-explore/walking/strolls-and-rolls/ or www.youtube.com/@tamarvalleynationallandscape

The Strolls & Rolls routes were assessed and the guides produced thanks to additional grant funding from Defra.

The National Landscape team would love to hear your feedback. Please email your comments and photos to enquiries@tamarvalley.org.uk.

Naturally
Healthy
May



Naturally Healthy May

May is the perfect time of year to get outside and connect with the natural world. It is well known that just being outdoors can help reduce stress and anxiety levels.

Naturally Healthy May is part of Devon's Naturally Healthy initiative, led by Active Devon and Devon County Council on behalf of the Devon Local Nature Partnership. It brings together a wide range of partners to ensure that everyone in Devon is happier and healthier through increased connection to Nature. To find events in your local area, visit www.devonconnect.org or join one of Tamar Valley National Landscape's free walking groups, every Monday, Wednesday and Thursday morning (see page 11).

Celebrating 25 years of Buckland Community Orchard

Starting life as a way to teach schoolchildren about the biodiversity of Nature, Buckland Monachorum Community Orchard is celebrating its silver anniversary this year.

Begun by Celia Steven back in 1999, she shares that it has been such an inspiring thing to do, with so many people helping along the way. Celia knew she had a lot to learn, and was very grateful for all the help she received from West Devon Borough Council, Tamar Valley AONB Service (now Tamar Valley National Landscape) and the Apple Group in Bere Ferrers. Many friends in the village also played their part. But the orchard would never have happened without the generosity and continued support of local farmer, David Northmore who donated a piece of land.

The orchard is an amenity for all the people of the village to enjoy, and plays an important part in ensuring all campaigns to protect the world's biodiversity continue.

There have been many events over the years, including 'Teddy Bears Picnics', barbecues, apple pie competitions, pressing apples to produce juice, and many traditional events such as wassailing.

The orchard interpretation board explains the history of the orchard, detailing all 32 trees that have been planted. A new apple tree was planted this year to mark the 25-year anniversary.

See pages 12-13 for celebration events to join in with. For more information:
 Facebook: Buckland Monachorum Community Orchard
 Website: bmco.info



Celia Steven planting an apple tree to mark the orchard's 25th anniversary

Plymouth Sound and Estuaries

Plymouth Sound and Estuaries Marine Protected Area is full of amazing, internationally important habitats, plants, and animals.

Over the last year, the Marine Recreational Mitigation and Management Scheme, Tamar Estuaries Consultative Forum and the ReMEDIES project have been working to update a marine recreational survey.

This report will give fantastic insight into how people use the estuary and surrounding waters. It will help highlight how and where we can work together to help reduce negative impacts and encourage positive ones so we can all continue to enjoy our amazing blue spaces. The findings will be shared soon at www.plymouth-mpa.uk/



Photos © Jules Lester





Railholiday's railway carriages



Railholiday scoops sustainability award

Local business, Railholiday is celebrating receiving the Cornwall Sustainability Award for Most Sustainable Small Business.

Based in St Germans, Railholiday offers beautifully restored iconic railway carriages converted into self-catering holiday homes at stations on the main line in Cornwall.

The company began its green journey by offering guests a discount on their holiday if they arrived by train, and ecology has always been important. Railholiday loves landscaping gardens for optimum wildlife benefit and giving away cuttings of pollinator-friendly plants. It also offers a carbon-offsetting plant-a-tree scheme, which has funded community orchards in Cornwall and Devon.

When deciding where to invest, the company looks at what will have the greatest impact on its carbon footprint and has installed solar panels and a biomass boiler.

Railholiday banks ethically too, and uses green electricity tariffs. Its website's green page (www.railholiday.co.uk/green.htm) is very comprehensive, with discussions on green issues on social media, a green blog, and a column in the parish newsletter and the local Voice newspaper.

Being community rooted is at the core of the business, with guests encouraged to explore the local area by promoting local businesses and providing maps for exploring by foot and bike. Guest information books include take-home tips for greener lifestyles. By getting involved in simple ways, guests can feel like they are contributing to a greener holiday.

This is what makes Railholiday's offering unique and the reason guests return again and again.



Recycling boxed up and ready to send to TerraCycle to be processed

Recycling For Charity project

The project that saves everyday waste from being incinerated, and generates money for charities has to date raised over £15,000 for its main charity Kicks Count, who aim to reduce UK stillbirths, as well as supporting local charities.

To find out more about the project and for a full list of what can be accepted and collection locations, visit www.south-hill.co.uk/charity-recycling



Calstock Parish Crew – come onboard!

Calstock Parish Council is gathering together as many willing people as possible to help with a number of projects that will improve their parish.

If you have some spare time and would like to join their friendly crew, please get in touch.

They are looking for people to help them with:

- General grounds work
- Environmental projects
- Renovation of buildings, structures and walls
- Cemetery upkeep

Their next projects include clearing vegetation in Albaston Cemetery and Gunnislake car park. Why not have some fun with friendly and like-minded people in the fresh air?

Please contact **Clare Bullimore, Parish Clerk** – clerk@calstockparishcouncil.gov.uk, or **Pete Gadd, Outside Services Leader** – estates@calstockparishcouncil.gov.uk, or call **01822 748847**.



Calstock Parish Archive

With the brighter weather arriving, you might decide to have a Spring clean. If you're having a clear out and come across anything you think might be suitable for the Calstock Parish Archive, please get in touch by emailing cpatenquiries@gmail.com or call 01822 833973. Their opening times and further information can be found at www.calstockhistory.org.uk.

This summer, Calstock Parish Archive will be at:

- Tamar Valley Fete
- Latchley, Chilsworthy & Cox Park Show
- Calstock Heritage Weekend

Please see pages 12 and 13 for details, and visit their stand to say hello!

Opposite: Lower Kelly, Calstock 1880s - note the incline railway coming across the bridge and down to the river



Skinnards Bakery, Albaston early 1900s. Later to become Fernleigh House Nursing Home



Stoke Climsland Carbon Zero Homes Project



This project has been active for eight months and in its current form ended in April 2024 when funding from the Community Levelling Up Programme ended. But the mission continues. Collaboration has been a constant theme and Tamar Energy Community (TEC) will be providing an ongoing link to enable parish residents to progress their retrofit journeys.

Retrofit quickly became the focus for improving the energy efficiency of homes. The idea behind whole house retrofit is to have a plan which can be carried out over time, helping to spread the cost.

In January, the project launched an animation highlighting six key suggestions for practical improvements for more efficient homes:

- Understanding the underlying condition of a house
- Insulation
- Ventilation
- Heating a home
- Cooling a home
- The use of renewable and smart technologies



This animation has been developed in collaboration with Tamar Energy Community, Two Counties Property Surveyors, Cornwall Partnership NHS Foundation Trust and Tamar Valley Health, and can be watched by scanning the QR code.

They have handled 102 enquiries, issued various advice and guidance notes, and signed up 45 households to their Property Diagnostics Campaign to receive surveys which were subsidised through the project.

There are plans for a group of volunteers to create the **Stoke Climsland Retrofit Guide**, containing much of the learning from this project. When available, this can be downloaded from Stoke Climsland Parish Council's website – www.stokeclimslandparishcouncil.org.



The Carbon Zero Homes Project aims to support households to make changes to existing buildings so that energy consumption and emissions are reduced, resulting in warmer, healthier and more comfortable homes. This project is fully funded by the Community Levelling Up Programme.

Tamar Energy Community provides support to householders across west Devon and south east Cornwall through the Local Energy Advice Demonstrator initiative (LEAD). To get in touch, email hello@tamarenergycommunity.com, call 0800 2335414 or complete the enquiry form here: <https://tamarenergycommunity.com/request-support/>



Tamar Valley National Landscape

About Us

Tamar Valley National Landscape helps to conserve and enhance the natural beauty of the Tamar Valley by offering advice and assistance to community groups, landowners, farmers, residents and visitors.

There are 46 National Landscapes in the UK. The Tamar Valley itself covers an area of 75 square miles (195 sq km).

Tamar Valley National Landscape
Tamar Valley Centre
Cemetery Road, Drakewalls,
Gunnislake,
Cornwall, PL18 9FE
t: 0300 123 4100
e: enquiries@tamarvalley.org.uk
w: www.tamarvalley-nl.org.uk

Help us keep our National Landscape, a designated Area of Outstanding Natural Beauty, special whilst exploring the Tamar Valley. Please follow the Countryside Code.

Produced by

Tamar Valley National Landscape:
Charlotte Dancer
charlotte.dancer@cornwall.gov.uk

Editorial support:

Tracey Eustice, PED

Design:

PED (Paul Eustice Design)

Print:

Brightsea Print Group, Exeter

While every effort has been made to ensure accuracy within this newsletter, no responsibility will be accepted for any omissions. Please pass this newsletter on to a friend before recycling.



Follow us:



www.facebook.com/tamarvalleynl



www.instagram.com/tamarvalleynl/



[@tamarvalleynl/](https://twitter.com/tamarvalleynl)



[/tamarvalleynl](https://www.linkedin.com/company/tamarvalleynl/)



[@tamarvalleynationallandscape](https://www.youtube.com/channel/UC...)



Tavi Taskforce volunteers

Making a difference to Tamar Valley communities

Last year's Sustainable Development Fund, awarded through Tamar Valley National Landscape for projects that help to conserve and enhance the area, made a big difference to communities throughout the Tamar Valley.

Five projects were successful, benefitting from a share of £5,000;

- St Andrews Primary School, Buckland Monachorum, Environment Enhancement
- Kit Hill Sound Map, available to experience at the Tamar Valley Centre
- Safety fencing at East Kit Hill Mine site
- Willow Tit project
- Rainwater harvesting, Landulph Village Green

Unfortunately, we are unable to offer the Fund this year, but are hopeful that we will be able to reinstate it in future years.



East Kit Hill mine buildings

Meet the Team

We have a dedicated team of staff who care for Tamar Valley National Landscape, including a team of six who are delivering the £3.2 million Tamara Landscape Partnership Scheme. Discover our different roles, and contact us direct at www.tamarvalley-nl.org.uk/our-work/#meet-the-team-anchor